



Acticell

Max Ward
Nat. "N" Dip. - Elect.
Member of CK 1999/047116/23
Tel : +27(0)31 701 2755
Fax : +27(0)86 565 0774
Cell : +27(0)79 033 9600
Email : maxward@acticell.co.za
Website : www.acticell.co.za

Thermal Survey Report - Inspection carried out on - Thursday 14 March 2013

***Distribution Boards & Control Panels
Faults Identified - (Street Name)***

Prepared for:

Company Name (Pty) Ltd

Contact Name
Street Address,
Street Address,
Street Address,
Code

Tel : +27(0)31

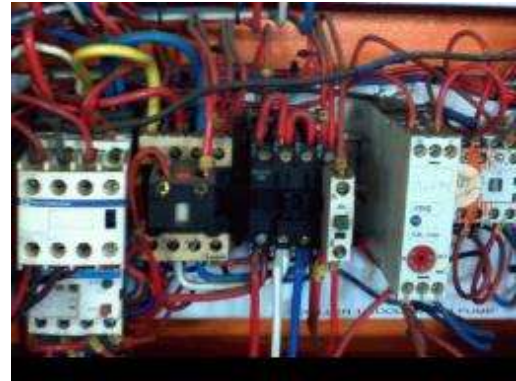
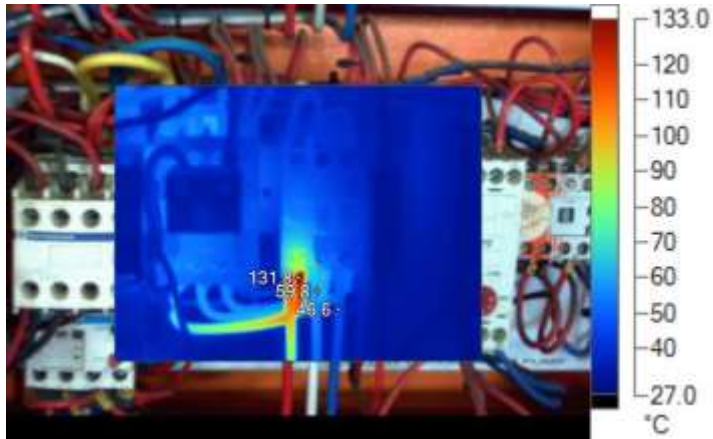
Fax : +27(0)31

Cell : +27(0)83

Email : @ .co.za

EXAMPLE

Chiller Room - Main DB - Distribution Board



Visible Light Image

35 - 3rd Contactor - Red Phase.IS2

3/14/2013 10:11:16 AM

Image Info

Emissivity	0.95
Image Range	28.7°C to 131.8°C
Camera serial number	Ti25-10031043
Camera Manufacturer	Fluke

Main Image Annotations

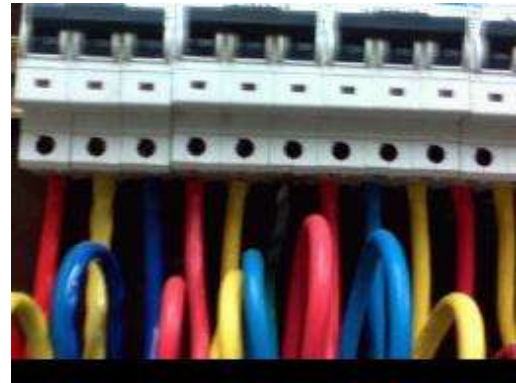
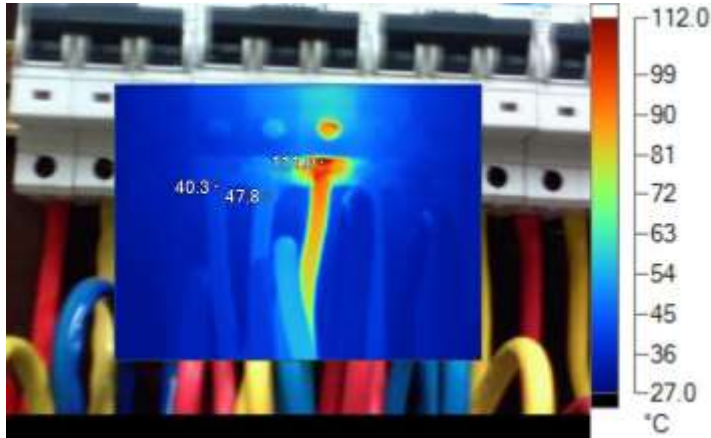
Site Location	Chiller Room
User Reference	Main Distribution Board (Third Panel - Third Row - Third Contactor)
Equipment ID	3 Phase Contactor
Fault Location	Red Phase - Load Connection
Fault Description	High Operating Temperature Identified Visible Insulation Degradation Visible Loose Connection
Attention	U - Urgent
Recommended Action	Schedule Urgent Inspection Carry out "3 Phase - Amp - Load" Test Schedule Urgent "Outage" Open - Isolate - Earth
Possible Solutions	Check and Tighten all Connections Replace 3 Phase Contactor
Follow Up Action	Continue Monitoring Operating Temperature Thermal Scan - After Repairs Completed Annual Thermal Survey to Continue

Main Image Markers

Name	Temperature	Emissivity
Red Phase	131.8°C	0.95
White Phase	59.8°C	0.95
Blue Phase	46.6°C	0.95

EXAMPLE

Tunnel Drive - ABB 7-12 - Distribution Board



Visible Light Image

52 - 3 Ph CBKR No 8 - Blue Phase.IS2

3/14/2013 10:40:35 AM

Image Info

Emissivity	0.95
Image Range	28.8°C to 111.0°C
Camera serial number	Ti25-10031043
Camera Manufacturer	Fluke

Main Image Annotations

Site Location	Tunnel Drive
User Reference	ABB 7 - 12 - Distribution Board
Equipment ID	3 Phase Circuit Breaker (Number 8)
Fault Location	Blue Phase - Load Connection
Fault Description	High Operating Temperature Identified Visible Insulation Degradation Visible Loose Connection
Attention	U - Urgent
Recommended Action	Schedule Urgent Inspection Carry out "3 Phase - Amp - Load" Test Schedule Urgent "Outage" Open - Isolate - Earth
Possible Solutions	Check and Tighten all Connections Replace 3 Phase Circuit Breaker
Follow Up Action	Continue Monitoring Operating Temperature Thermal Scan - After Repairs Completed Annual Thermal Survey to Continue

Main Image Markers

Name	Temperature	Emissivity
Red Phase	40.3°C	0.95
White Phase	47.8°C	0.95
Blue Phase	111.0°C	0.95

EXAMPLE